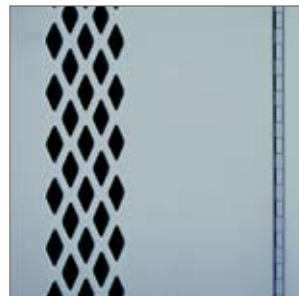




ALL WELDED  
LOCKER



# ALL WELDED LOCKER



## FINISH OPTIONS

The All Welded Locker is available in all metal locker finishes.

See finish card.

For more detail, please refer to the following specification sheet.

- Locker Accessories

## DIMENSIONS

### SINGLE TIER (PER OPENING)

Width: 12", 18"  
Depth: 12", 18"  
Height: 72"

### DOUBLE TIER (PER OPENING)

Width: 12"  
Depth: 12", 18"  
Height: 36"

## SPECIFICATIONS

- Integrated frame construction adds strength and rigidity
- M.I.G. welded 16-gauge steel bodies with heavy-duty 14-gauge steel doors
- 18-gauge reinforcing panels welded inside door facings
- Durable, recessed, zinc alloy handles with snag-free nickel plated finish include padlock attachment (padlocks not included)
- Full length piano-hinges maintain positive door alignment
- Reinforcing panels securely welded to inside door facing on 6" centers
- Single point magnetic latch (no moving parts) is securely welded to locker body
- M.I.G. welded base channels create solid footing beneath each locker body
- Available in all metal locker finishes

## OPTION SPECIFICATIONS

- Built-in locks
- 4" high bases for additional clearance below door openings
- Diamond-shaped perforations (stocked) or mini-louvres (not stocked)
- Single or double-tiered selections
- Three, four, five and six-tier all welded selections also available