



Case Study

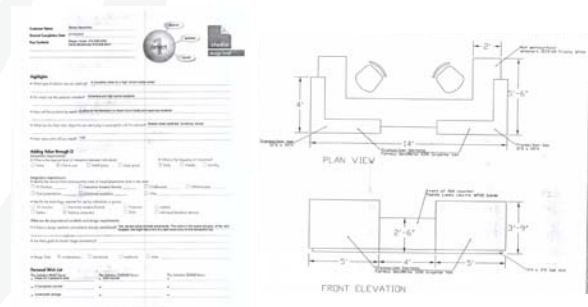
High School Circulation Desk



This high school is in one of the fastest-growing school districts in the country, and prides itself on its high level of academic achievement. It is a modern, state-of-the-art facility.

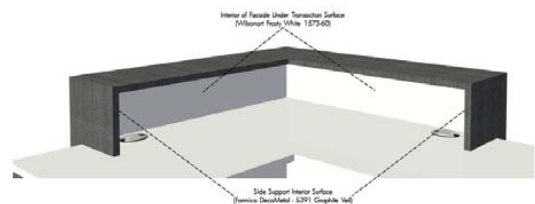
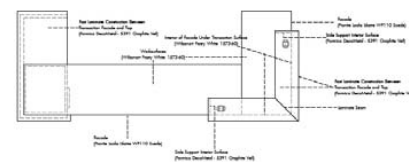
This state-of-the-art high school was building an addition that would include a new media center. They were looking for a circulation desk that would the clean, modern aesthetic of the space, and still be functional for the librarians.

A designer with our dealer in the area filled out the design brief on the Vanerum•Stelter STUdio web site and emailed it to us, along with a line drawing of a concept she had in mind. STUdio did a plan drawing and renderings of the desk, collected feedback, from the client, and did a couple rounds of revisions to create a solution that met the needs and vision of the customer. The desk was then manufactured and shipped, and done so in a manner that would make installation as easy as possible.



Design brief and line drawing supplied by the dealer outlining the scope

The result was a beautiful custom circulation desk that matched the look and feel of the new media center, met the storage and technology needs of the customer, and allowed the librarians to interact easily with students.



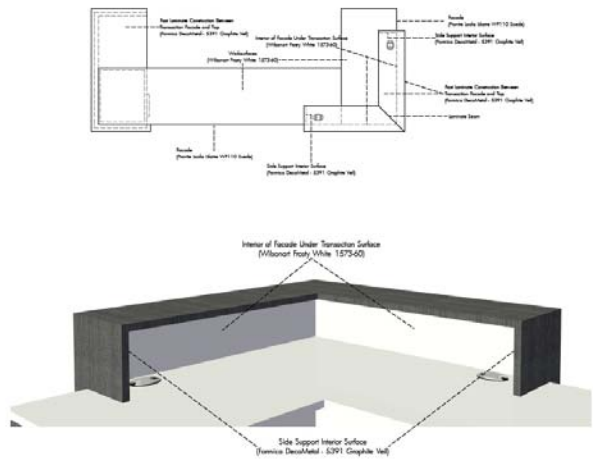
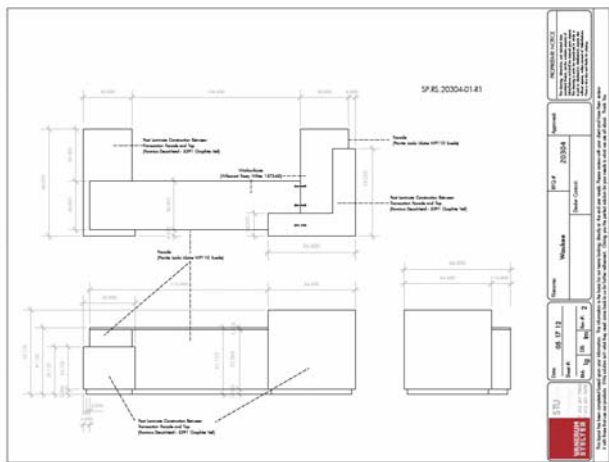
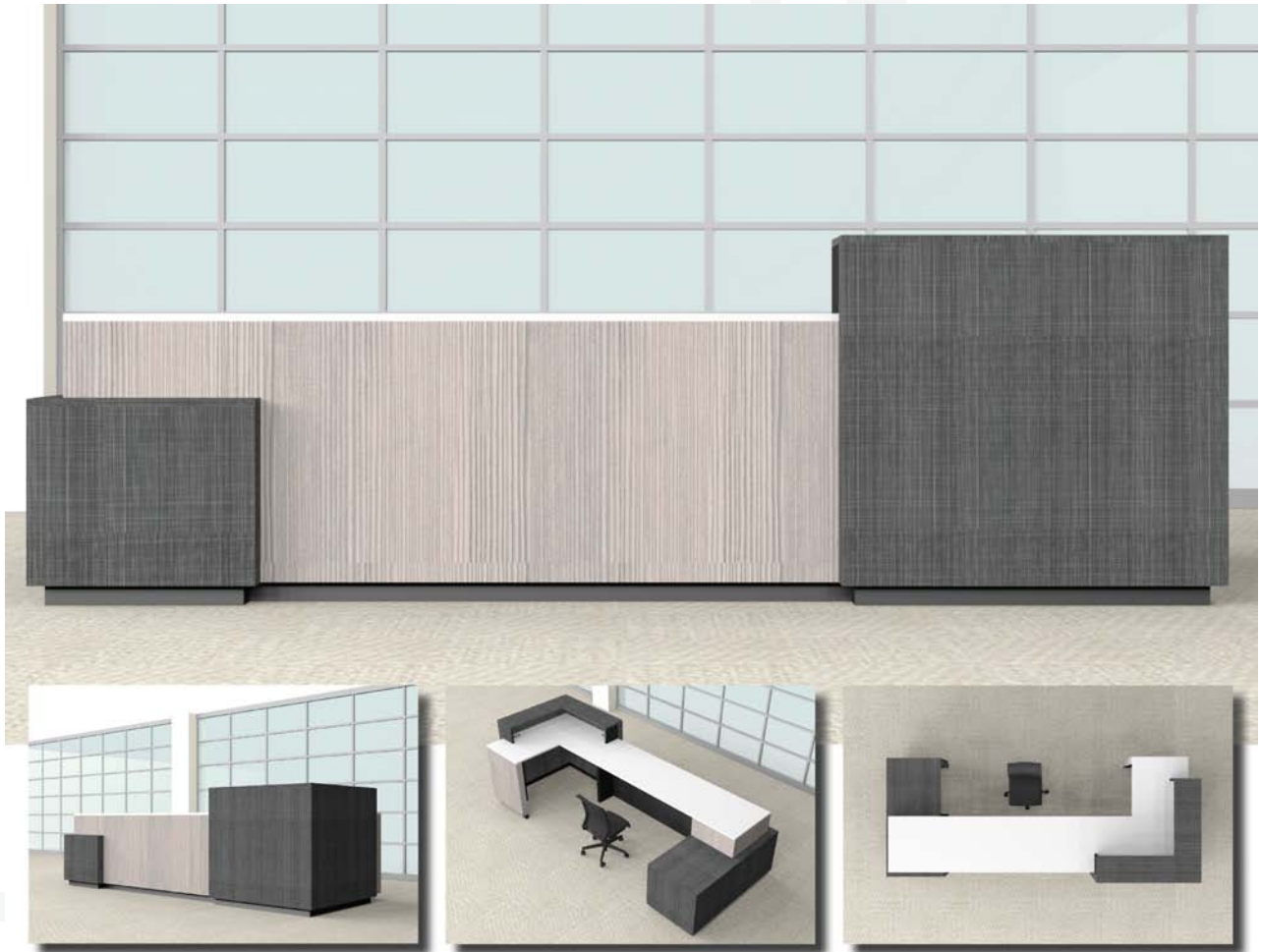
Plan drawings and Completed product rendering





Case Study

High School Circulation Desk



Plan drawings and renderings of final product